



HEALTH & SAFETY  
LABORATORY



# Occupational Hygiene – A Preventative Approach

Matt Coldwell BSc (Hons) CMFOH

# Why health?



## Work-related ill health

**1.3 million**  
Workers suffering from a work-related illness (new or long standing)

**0.5 million**  
Workers suffering from work-related musculoskeletal disorders (new or long standing)

**0.5 million**  
Workers suffering from work-related stress, depression or anxiety (new or long standing)

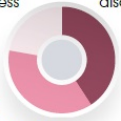
**25.9 million**  
Working days lost due to work-related illness

Estimates based on self-reports from the Labour Force Survey (LFS) in 2015/16

Type of work-related ill health:

New and long standing cases: Self reports 2015/16 (LFS)

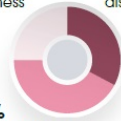
22% Other type of illness



37% Stress, depression or anxiety

New cases: Self reports 2015/16 (LFS)

25% Other type of illness



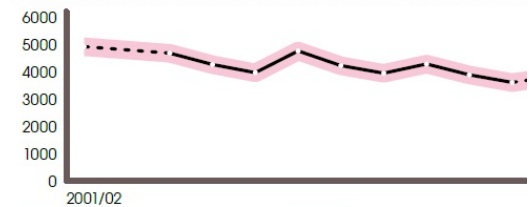
42% Stress, depression or anxiety

New reports 2015/16

15% Other type of illness

35% Stress, depression or anxiety

Estimated self-reported work-related ill health per 100,000 new and long standing cases



Shaded area represents a 95% confidence interval. No ill health data was reported in 2012/13, represent



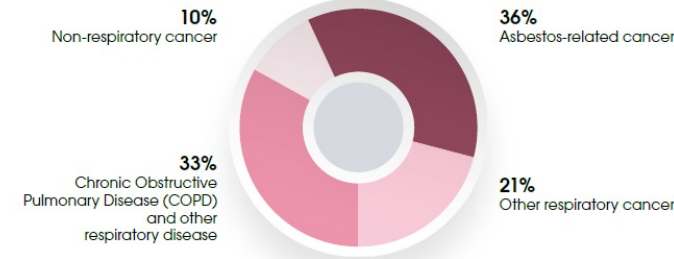
## Work-related ill health

**13,000**  
Deaths each year estimated to be linked to past exposures at work, primarily to chemicals or dusts

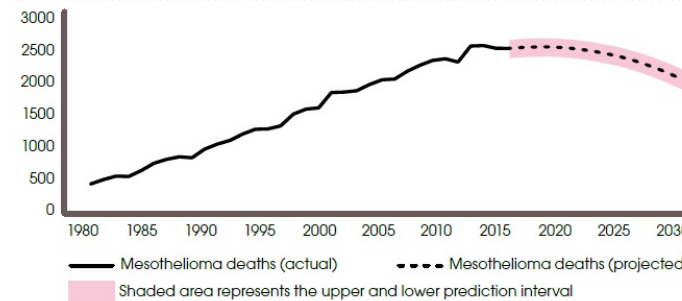
**2515**  
Mesothelioma deaths in 2014, with a similar number of lung cancer deaths linked to past exposures to asbestos

**14,000**  
Estimated new cases of breathing or lung problems annually, according to self-reports from the Labour Force Survey

Estimated current annual deaths due to work-related diseases



Mesothelioma in Great Britain: annual actual and predicted deaths



There are projected to be around 2,500 mesothelioma deaths per year for the rest of this decade before numbers begin to decline.

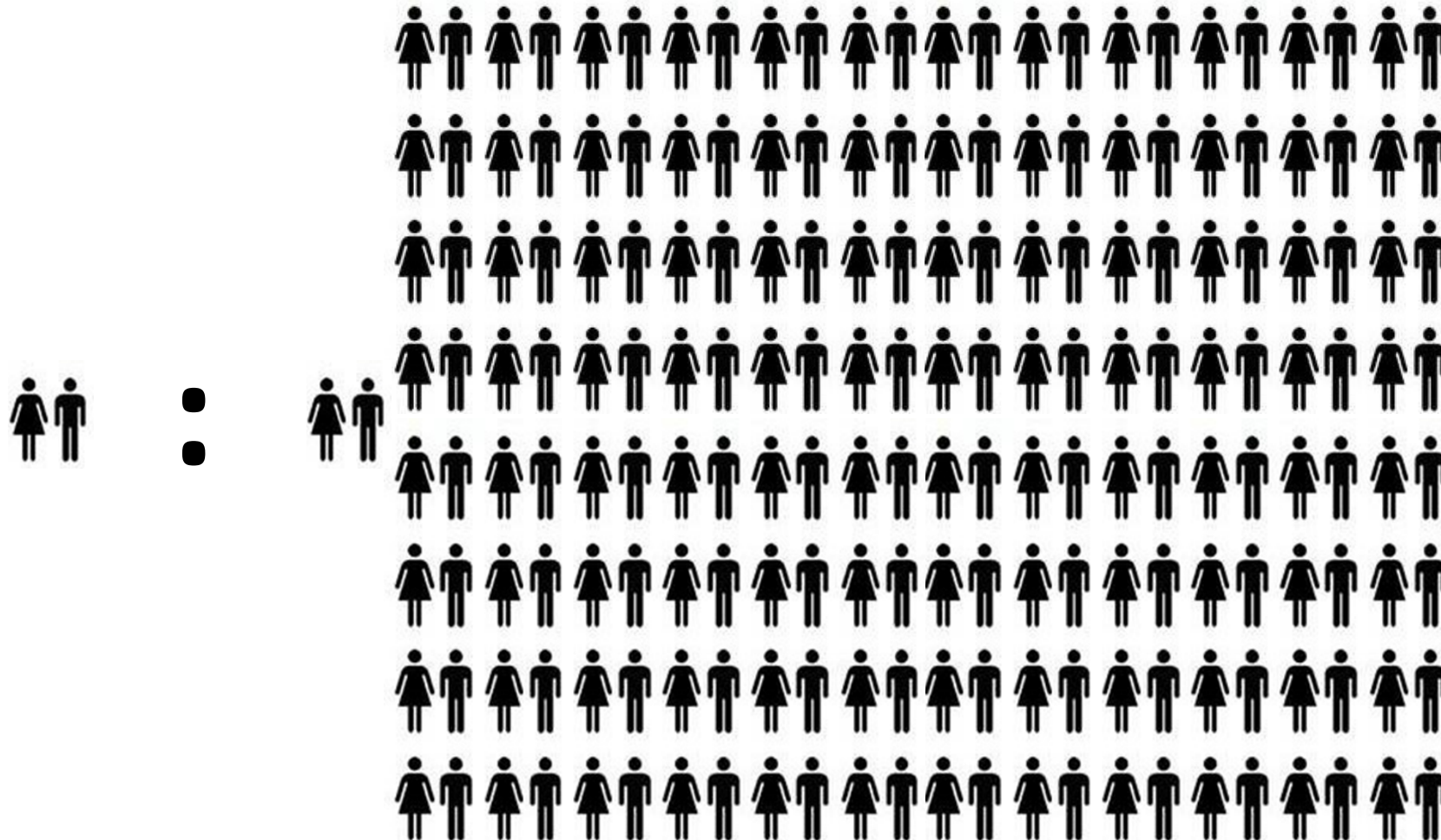
An estimated 150 new cases of occupational asthma were seen by chest physicians each year on average over the last three years. This is lower than the early 2000's, but there has been little change over the last decade.

Find out the story behind the key figures. Visit [www.hse.gov.uk/statistics/causdis/](http://www.hse.gov.uk/statistics/causdis/)

# Why health?



HEALTH & SAFETY  
LABORATORY





# Why health?



HEALTH & SAFETY  
LABORATORY

This website uses non-intrusive cookies to improve your user experience. You can visit our [cookie privacy page](#) for more information.

**HSE Health and Safety Executive**

Home News Guidance About you

Google Custom Search Search

HSE > About HSE > Strategies and plans > Sector plans

Rate this page ☆☆☆☆☆ Share

**Strategies and plans**

- HelpGBWorkWell strategy
- Business plan
- + Sector plans
- Health and Work strategy**
- Health and Work
- HSE's health and safety plan
- Strategy and plans archive

**Related content**

- LA Partnership
- Annual reports
- Worker involvement
- Leadership
- Enforcement
- Health and safety myths
- HSE jobs

**Health and Work strategy**

Work-related stress, n strategy.

Work-related : The second most cor related ill-health case

**Musculoskeletal**

The most common re health cases and 34%

**Occupational**

It continues to lead to

**Our aim**

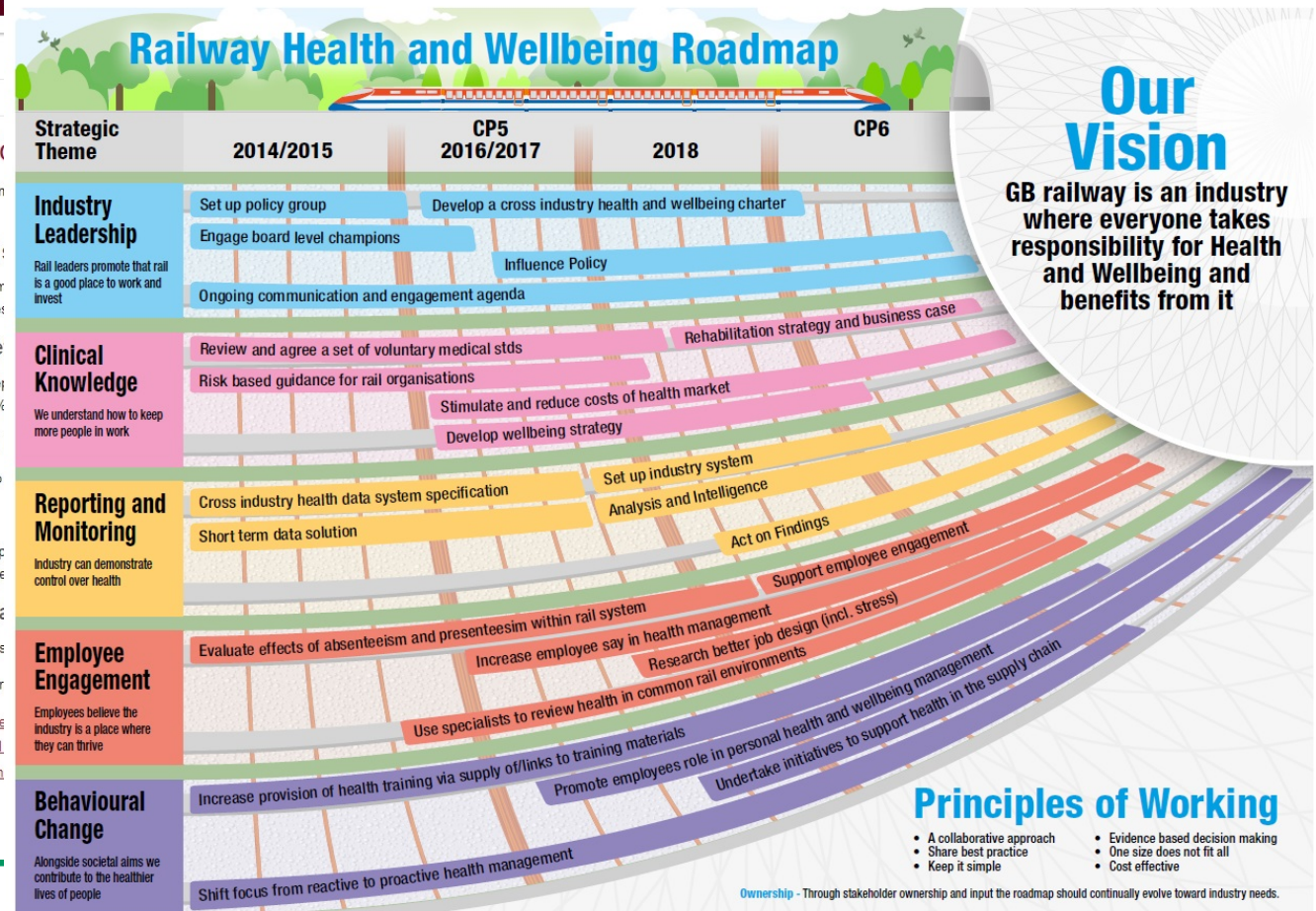
To work in partnership rate and number of ne

**The strategy**

The draft [strategy](#) s

The following three dr

- [work-related str](#)
- [musculoskeletal](#)
- [occupational lun](#)



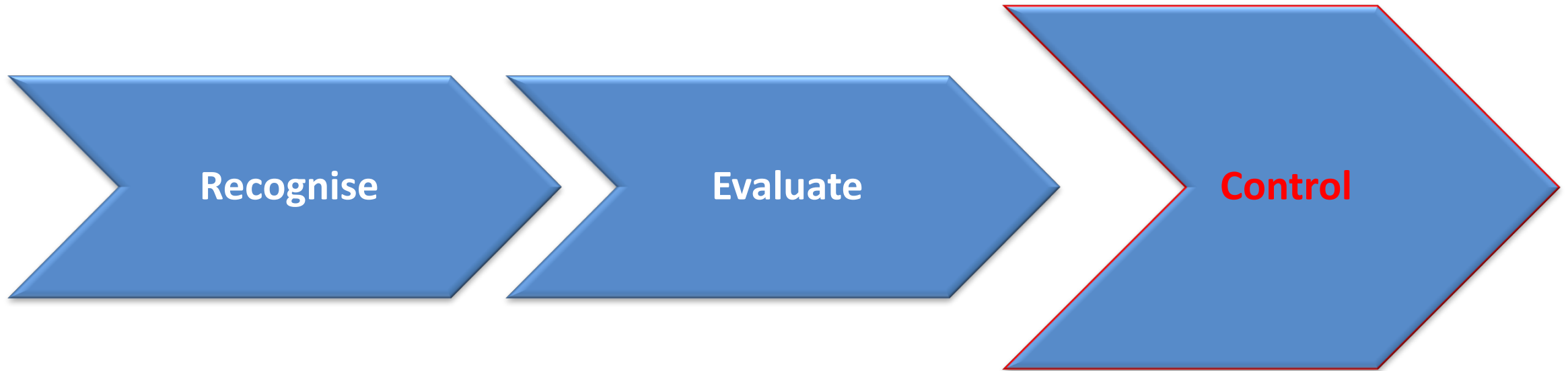
ORR  
OFFICE OF RAIL REGULATION

onal Health

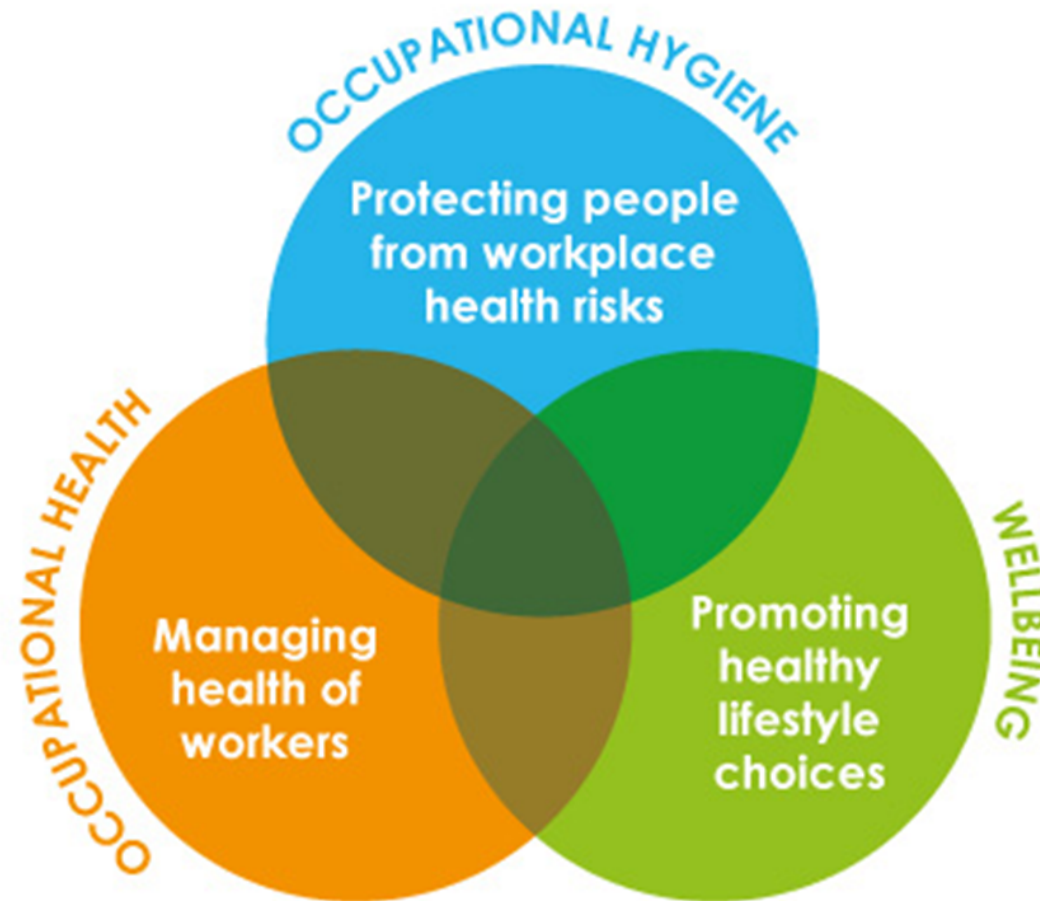
# What is occupational hygiene?



# What is occupational hygiene?



# Where does hygiene sit?



# How can occupational hygiene help?

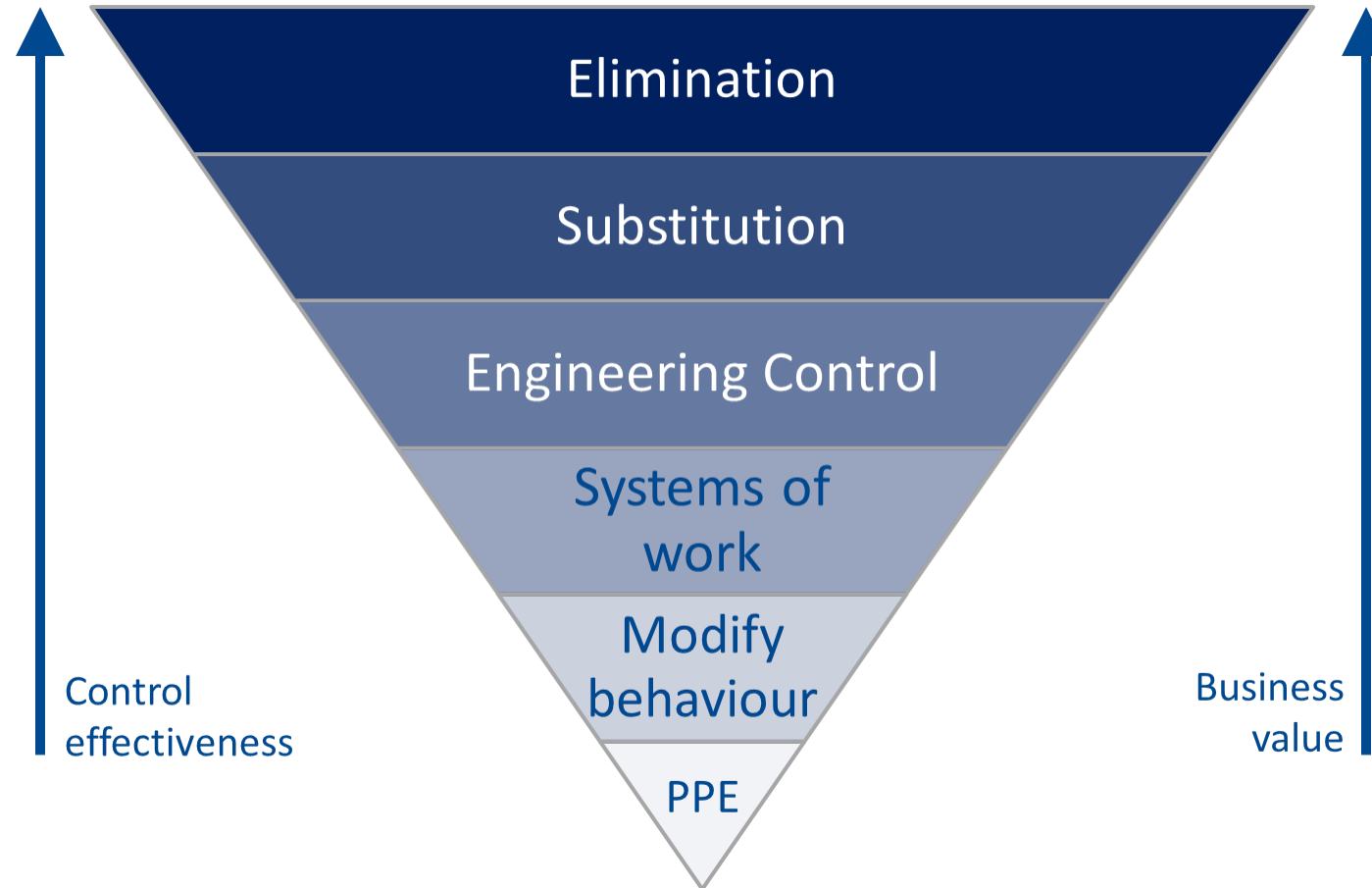




# Common failings

- Inadequate risk assessment
- Competence
- Inadequate training
- Over reliance on PPE
- Lack of OH expertise!

# Hierarchy of control



# Control Improvements





# Control Improvements



# Collaborative working

- Working groups
- Common issues
- Share good practice
- Cost effective to pool resources



# RSSB Model

- Access relevant expertise
- Analyse
- Action



**Ballast Dust**  
Working Group



# Other suggested steps

- BOHS Breathe Freely Management HI Standard
- Utilise relevant expertise more
- Rail health summit?
- Look for shared research opportunities
- Link up with construction industry?

# More information

HSE are hosting a shared research workshop on 'Reducing exposure to harmful dust in construction' at our Rose Court Offices in London on the 27th September 2017.

## Do you Breathe Freely?

Breathe Freely is a BOHS initiative, aimed at reducing occupational lung disease in the UK, which causes significant debilitating ill-health and an estimated 13,000 deaths per year.

## Workplace Healthy Lungs Summit 2017

22<sup>nd</sup> November 2017

QEII Centre, London



NEW FREE BREAKFAST ROADSHOWS THIS AUTUMN

**REGISTER NOW** - click on the links below for more information and registration forms.

CONSTRUCTION ROADSHOWS

MANUFACTURING ROADSHOWS



**WORKING TOGETHER TO BEAT OCCUPATIONAL CANCER**



What can an Occupational Hygienist help with?



HEALTH & SAFETY  
LABORATORY



HSL is the commercial arm of the Health and Safety Executive, HSE. Our commercial work delivers high quality science to meet the needs of industry and government in the UK and overseas. Our commercial customers can commission services and research using our state-of-the-art scientific laboratory in Buxton, as well as analytical expertise from other parts of HSE's science base.